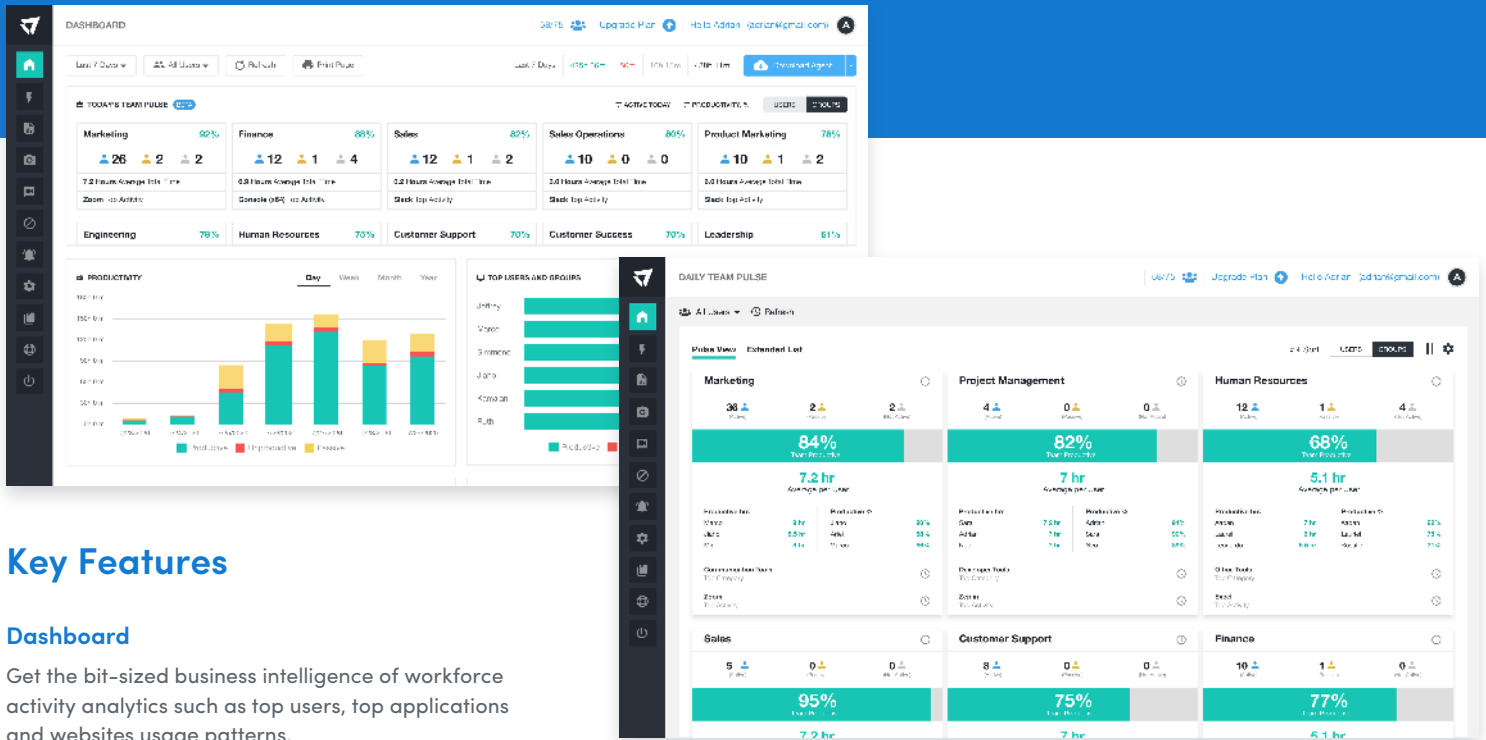




Empowering team productivity through Workforce Analytics

ActivTrak is a cloud native SaaS application that provides visibility and analytics into how employees work whether in office or remote, delivering insights that improve workforce productivity and reduce compliance risks. With deep data analytics, ActivTrak gives you the answers you need to help your workforce and your business be successful and provides the workflow to make it happen. With more than 7,500 customers and over 100,000 users of its Free version, ActivTrak's award-winning solution can be configured in minutes to provide immediate visibility and analysis.



Key Features

Dashboard

Get the bit-sized business intelligence of workforce activity analytics such as top users, top applications and websites usage patterns.

Activity Reports View

View a variety of analytical reports to drill-down into valuable team productivity insights for comparative analytics.

Real-Time Activity Monitoring

Understand employee workflows, uncover compliance risks and more. Create custom schedules for monitoring user activities for teams in different locations and time zones worldwide.

Data Connect

Leverage a powerful add-on analytics tool that provides direct access into key ActivTrak user behavioral activity data to query and integrate with external BI data visualization tools and other business data sources.

Alarms

Utilize pre-built alarms and create your own with any combinations of conditions to fit your operational compliance needs. Configure automated reactions such as email notifications or notifications to external messaging apps such as Slack or Microsoft Teams.

Team Productivity Pulse

Immediately see team productivity metrics and availability status via an at-a-glance dashboard throughout the day.

Screenshot Captures

See the visual evidence of present &/or past history of activities. Protect sensitive data with screenshot redaction and flag screen content that introduces compliance vulnerabilities.

Activity Classification

Leverage ActivTrak's intelligent engine that automatically builds a library of apps and sites employees use and classifies productivity categories with AI-given algorithms.

Activity Logs

Reference detailed logs of user activities and events collected to better understand what transpired, when and by whom for audit trails.

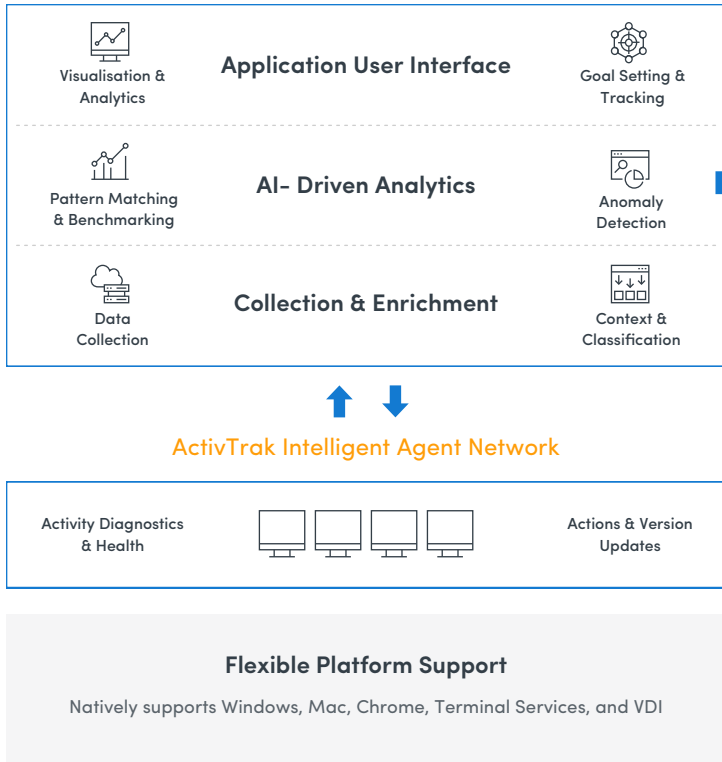
Customer Use Cases

- Workforce Productivity
- Remote Workforce Management
- Operational Efficiency
- User Activity & Employee Monitoring
- Workforce Analytics
- Data Privacy & Compliance

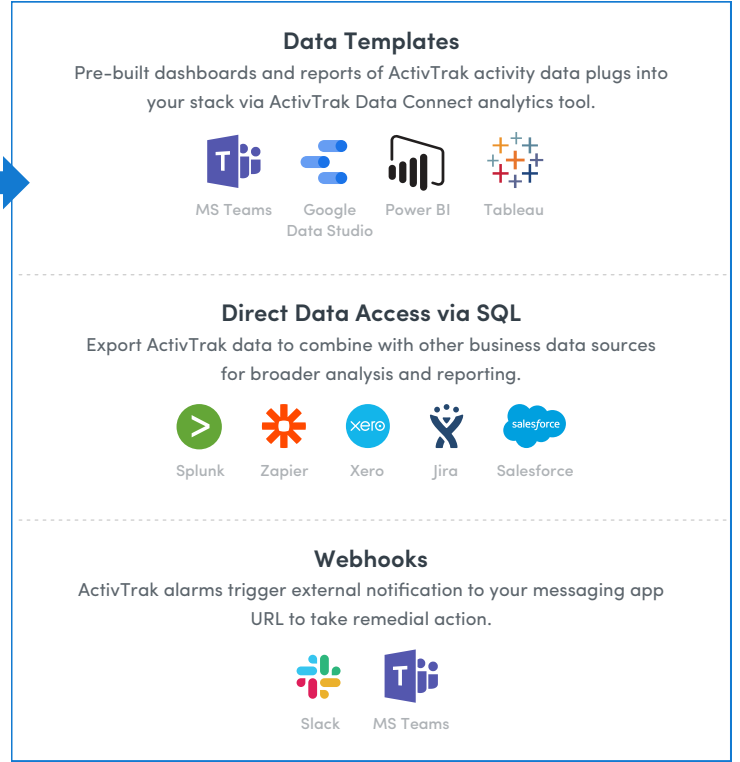
Key Insights Uncovered

- Are teams aligned and making progress to goals?
- What is employees' level of engagement?
- Which apps and sites consume most of their time?
- What are their distractions?
- What bottlenecks are in their way?
- Who are top performers and what success patterns are repeatable?
- Who might be on the verge of burnout?
- Where are potential compliance risks?

Platform ActivTrak (cloud-native)



Connectors



Plans Available

Freemium

Up to 3 Users / 3 GB Data Storage

For small teams just getting started with ActivTrak

Advanced

Unlimited Users & Data Storage

For organizations that need deeper access and flexibility to use their data

MSP

- Exclusive licence and add-on discounts for MSP Partners, based on tier
- For Managed Service Providers interested in delivering ActivTrak as a managed service, integrated into an existing portfolio, or as a standalone offering

Reviews & Awards



Capterra ★★★★★ 488 Reviews: 4.6/5

CROWD ★★★★★ 127 Reviews: 4.5/5

"Easy to start and install, easy to navigate and everything is intuitive from the start. Reports are VERY detailed and show you everything you need and some more."

Founder / CEO - Information Technology and Services

**Getting started is easy.
Be up and running in minutes.**

[Create free account](#)

"ActivTrak was able to help us manage our remote workforce, implement additional security controls and understand productivity in an easy seamless way."

C-Level Executive in Corporate